

HISTORIC DISTRICT COMMISSION
TOWN OF JAFFREY, NEW HAMPSHIRE
DRAFT - MINUTES OF MEETING of JULY 10, 2017

July 16, 2017

Present: Ron Reid, Kit Schiele, Rick Stein, Frank Sterling

Unable to attend: Marijean Parry, Matt Devlin, Jack Minter

Guests: Nadine Miller, Amy Dixon (CLG representatives), Jo Anne Carr, (Town of Jaffrey)

Chairman Ron Reid called the meeting to order at 4:15 pm.

Discussion:

Nadine Miller and Amy Dixon, two representatives of the CLG program, met with the HDC for a routine visit about the Historic District/CLG program. As a commission, we were presented with a document recognizing Jaffrey as a Certified Local Government and partner in the Federal preservation program since 1987!

Betsy and David Trimble attended the meeting to inquire about a shed they hope to install. They presented dimensions, materials, and styles from Reed's Ferry products. While the HDC commissions had no objections to the to their plans or site placement, it was agreed there was no need for a public hearing. Frank Sterling recommended that they contact our local building inspector to make sure that proper permits are obtained. David also mentioned at some point they will need to resurface their driveway.

Rick Stein brought up the idea of closing off a section of Harkness Road in front of the old Currier's Inn. The intersection is dangerous and the road is in disrepair. Those attending supported Rick's idea and hopefully this will move forward in the future.

PLANNING REPORT: No Report.

SELECTMEN: No Report.

Meeting adjourned at 4:54 pm.

The next meeting of the Commission will be held Thursday, August 3rd at 7pm at the Meeting House. Meetings are open to the public. Minutes are posted at the Town Offices, the Post Office, and on the town website, http://www.townofjaffrey.com/Pages/JaffreyNH_Bcomm/HDC/index.

Respectfully submitted,
Kit Schiele, Secretary

Jattrey

11/10/17

THE CERTIFIED LOCAL GOVERNMENT PROGRAM FOR NEW HAMPSHIRE - JULY 2016

APPENDIX III -- PERFORMANCE STANDARDS EVALUATION

The Certified Local Government (CLG) shall maintain the following standards of performance, which shall be evaluated by the New Hampshire Division of Historical Resources / State Historic Preservation Office during its review of the CLG, which shall occur no less than once every four (4) years. The review procedures and the provisions for DHR/SHPO assistance to the CLG to help it meet and maintain these performance standards are described in *THE CERTIFIED LOCAL GOVERNMENT PROGRAM FOR NEW HAMPSHIRE*, September 2002.

YES	NO	
<u>✓</u>	_____	1. A local ordinance for the designation and protection of historic properties, which meets the requirements of the CLG program, is in place and enforced (i.e. requires mandatory review of, and rendered opinions regarding, construction, alteration, repair, moving and demolition within designated historic district/s).
<u>✓</u>	_____	2. A. An adequate and qualified historic preservation review commission is established and active (i.e. consists of 5-7 members with 3 alternates [or up to 5 alternates by law]; each member is a resident of the municipality; one shall be a selectman or the mayor; one may be a planning board member; all members appointed as prescribed by the local legislative body and in conformance with state law).
<u>✓</u>	_____	B. All members have interest, knowledge or competence in historic preservation.
<u>✓</u>	_____	C. An effort within the community to identify professionals that meet National Park Service professional criteria (36 CFR 61) and to include them as historic district commission members has been made.
<u>✓</u>	_____	D. Credentials (i.e. resumes) of commission members are kept on file, made available to the public, and shared with the DHR/SHPO.
<u>✓</u>	_____	E. Members' terms are staggered and of three years' duration.
<u>✓</u>	_____	F. Vacancies, including expired terms, are filled within 60 days.
<u>✓</u>	_____	G. Commission members attend DHR/SHPO-approved or sponsored informational or educational meetings pertaining to the work and functions of CLGs and historic district commissions, or historic preservation issues.

to the best of their ability

THE CERTIFIED LOCAL GOVERNMENT PROGRAM FOR NEW HAMPSHIRE - JULY 2016

APPENDIX III -- PERFORMANCE STANDARDS EVALUATION

YES

NO

H. Commission holds at least four (4) meetings per year, at regular intervals, advertised in advance, held in a public place and open to the public; applicants and abutters are notified in advance, in accordance with statutory requirements.

I. Commission has adopted rules of procedure conforming to state law, including specific criteria, steps, and time frames for receiving applications, conducting reviews, considering alternatives, rendering decisions, and acting on requests for rehearings and appeals. The rules must also include a code of conduct conforming to state law and to National Park Service standards.

J. All commission actions, meetings, and records conform to RSA 91-A, "The Right-to-Know Law." Pursuant to this law, commission decisions are made in a public forum; written minutes of the commission's proceedings, meetings, and actions are available for public inspection and transcription, except as otherwise prohibited by statute; applicants are advised of the commission's decisions as provided by state law.

K. Public participation, reaction and comment on the CLG/s historic preservation activities are encouraged. Specific mechanisms and/or procedures to insure adequate public participation are in place.

L. The commission acts as a liaison on behalf of the local government to individuals and organizations concerned with historic preservation and is working toward continuing education of citizens within the CLG's jurisdiction, regarding historic preservation issues and concerns in order to foster appreciation and appropriate treatment of historical resources within the community.

3.

A. A system for the comprehensive identification and documentation of historical resources is in place and being followed, and periodically updated.

B. Survey efforts are integrated with local and regional planning processes. The commission acts in an advisory role to other officials, agencies, departments, boards, commissions, and committees of the local government with regard to the identification, protection, and preservation of local historical resources.

THE CERTIFIED LOCAL GOVERNMENT PROGRAM FOR NEW HAMPSHIRE – JULY 2016

APPENDIX III -- PERFORMANCE STANDARDS EVALUATION

YES	NO	
✓	_____	C. The commission is active in preparing, or overseeing the preparation of, historical resources components of local master plans; assisting the planning board, zoning board of adjustment, conservation commission, and other local land use boards and/or commissions to insure that historical resources are taken into account at every level of decision-making.
_____	_____	D. All inventory information under the commission's jurisdiction is stored securely, but made accessible to the public (except for restricted information), and duplicates are on file with the DHR/SHPO.
✓	_____	E. The local government is active in nominating properties to the National Register of Historic Places and reviews all proposed National Register nominations within its jurisdiction (i.e., within the geographic borders of the entire municipality, not limited to the area of the locally-designated historic district/s).
✓	_____	<p data-bbox="516 1087 646 1276">* has not come up, but would</p> <p data-bbox="670 1035 1380 1350">F. When the historic district commission reviews a National Register nomination or is involved with other activities for a specific resource type (e.g., an archaeological site) that is normally evaluated by a professional in a specific discipline (e.g., an archaeologist), and that discipline is not represented in the commission's membership, the commission shall seek expertise in the required discipline before rendering its decision. When archaeological resources, issues, or nominations are being reviewed, the commission shall contact the State Archaeologist of the DHR/SHPO for assistance in determining the types and levels of professional expertise needed.</p>
✓	_____	4. The local government satisfactorily performs the responsibilities delegated to it under the National Historic Preservation Act, in addition to any others that may be delegated to it pursuant to a written agreement between the DHR/SHPO and the Certified Local Government.
✓	_____	5. The local government annually prepares a report for the period October 1 through September 30 (the federal fiscal year). The report is available to the public, and is forwarded to the DHR/SHPO.

* should come to DHR for appt. to check files occasionally + make available to public

Reeds Ferry Sheds [\(http://www.reedsferry.com/\)](http://www.reedsferry.com/)

Installed Throughout New England

888-85-SHEDS

Order Online (<https://shed-builder.reedsferry.com/>) | Customer Service (<mailto:info@reedsferry.com>)

[Home \(http://www.reedsferry.com/\)](http://www.reedsferry.com/) [Sheds](#) [Gazebos](#)

[Features \(http://www.reedsferry.com/shed-tour\)](http://www.reedsferry.com/shed-tour)

[Pricing \(http://www.reedsferry.com/american-classic-price-list\)](http://www.reedsferry.com/american-classic-price-list)

[3D Tool \(https://shed-builder.reedsferry.com\)](https://shed-builder.reedsferry.com)

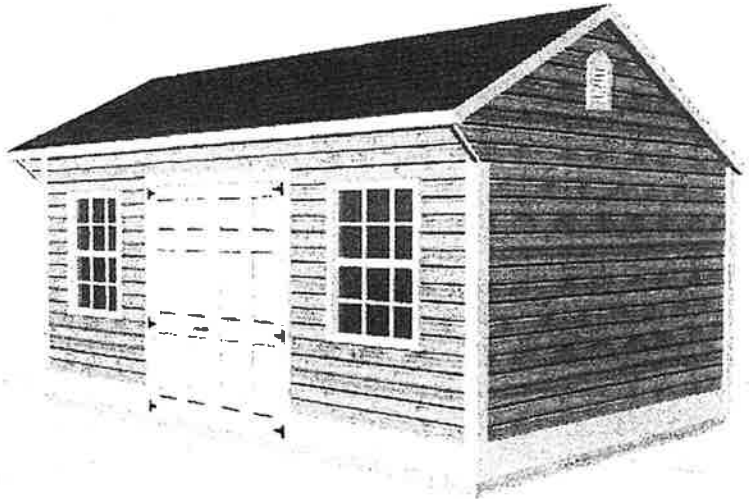
[Services](#) [FAQs](#) [About](#) [Directions \(http://www.reedsferry.com/directions\)](http://www.reedsferry.com/directions)

[Contact \(http://www.reedsferry.com/contact\)](http://www.reedsferry.com/contact)

CHOOSE OPTIONS

- Exterior
- Shutters
- Ramp - Double Door
- Flower Boxes
- Rooftop Cupola
- Bottom Trim
- Architectural Shingles
- Large Windows
- Cottage Vents
- Interior
- Loft
- Workbench
- Interior Light
- Wall Shelves
- PT Plywood Floor

Current Selection
10' x 16', Country Carriage,
Cedar Clapboard, Layout 4



INTERIOR ROTATE TILT - ZOOM +

Customize

Use this tool to order our most popular configurations. Reeds Ferry will contact you to confirm the order details; at that time you may make changes to customize your shed even further.

◀ BACK NEXT ▶

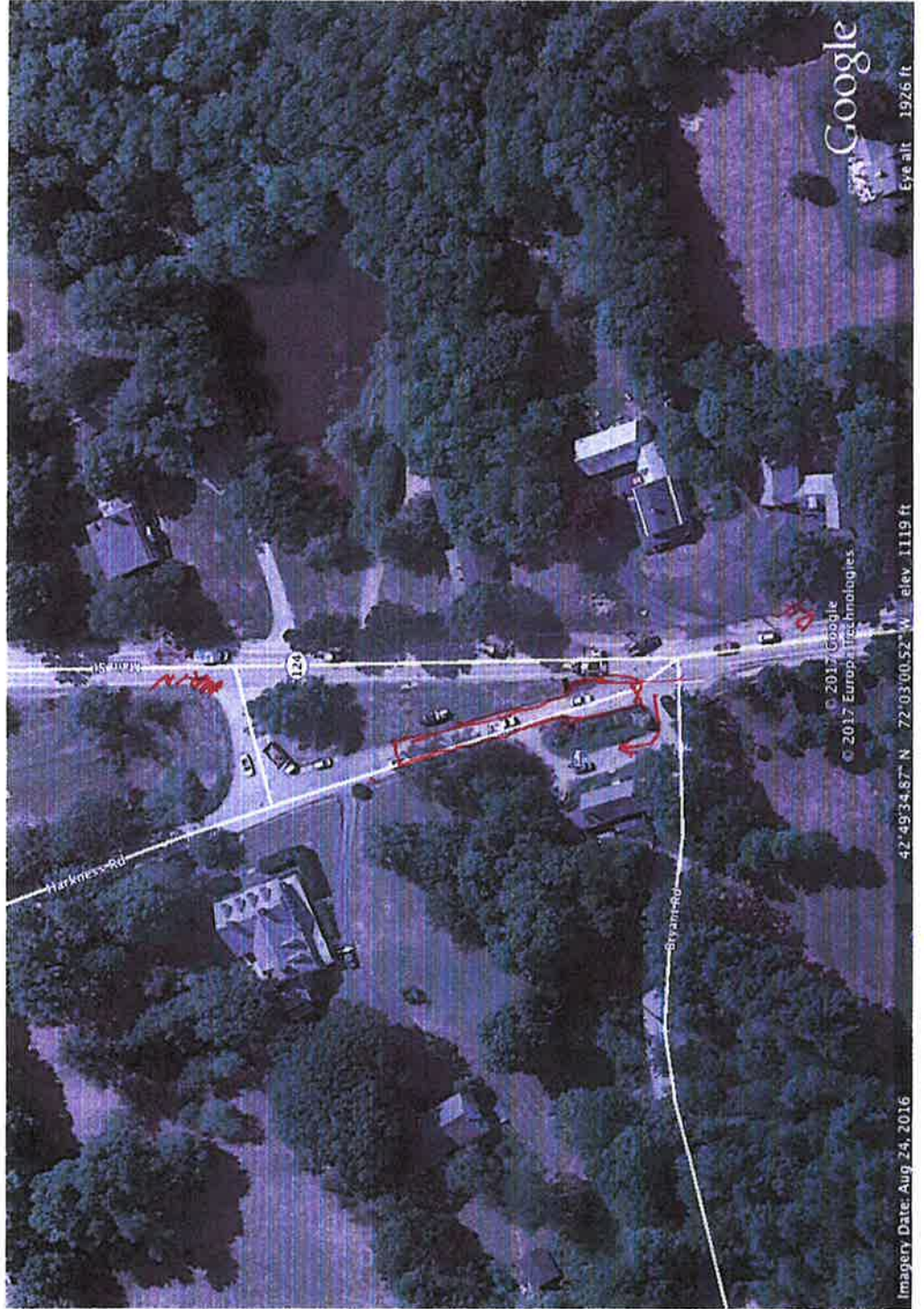
Order this shed

\$7,349.00

[Checkout](#)

If it says Reeds Ferry, you got a good one...

© Copyright 2017 Reeds Ferry Sheds, all rights reserved. Reeds Ferry® is a registered trademark of Reeds Ferry Small Buildings, Inc. NH | Ph: 603-883-1362



Google

Eye alt 1926 ft

© 2017 Google
© 2017 Europa Technologies

42°49'34.87" N 72°03'00.52" W elev 1119 ft

Imagery Date: Aug 24, 2016